



Golf Estate Management Services (Pty) Ltd

2023/522844/07

COMMERCIAL & RESIDENTIAL PROPERTY MANAGEMENT

CONTENT

01 ABOUT GEMS Page 3

- Company Background
- Company Organogram
- Facts & Figures

02 CURRENT CLIENTS Page 8

03 OUR TEAM Page 10

04 CONTACT US Page 14

01

ABOUT GEMS

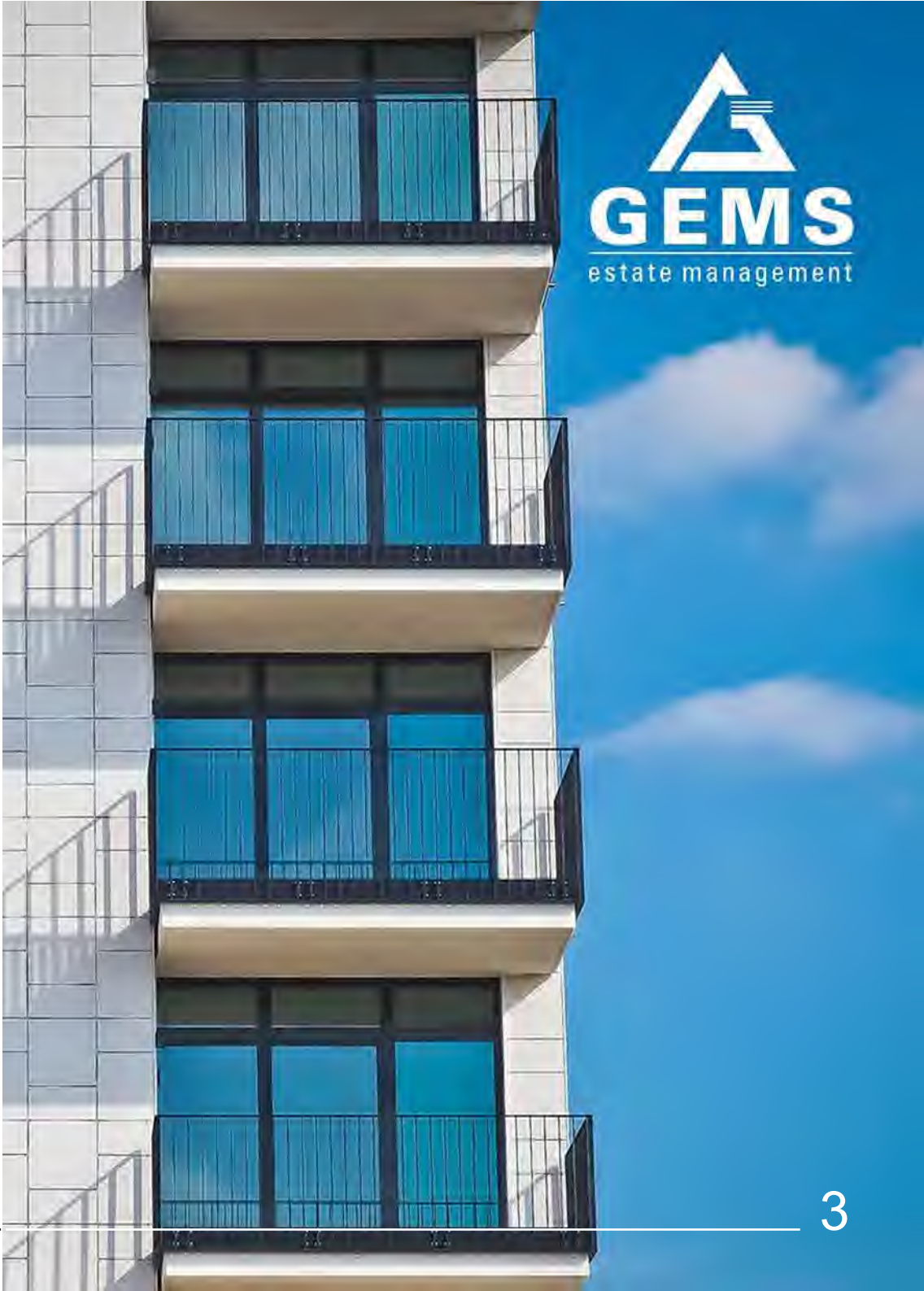
Company Background

GEMS is a company that provides a totally integrated management system for property developments. Our philosophy is to **“Exceed the expectations of our clients”** and our track record speaks for itself. We specialise in structuring estates, developing site specific management procedures and implementing these particularly during the development phases.

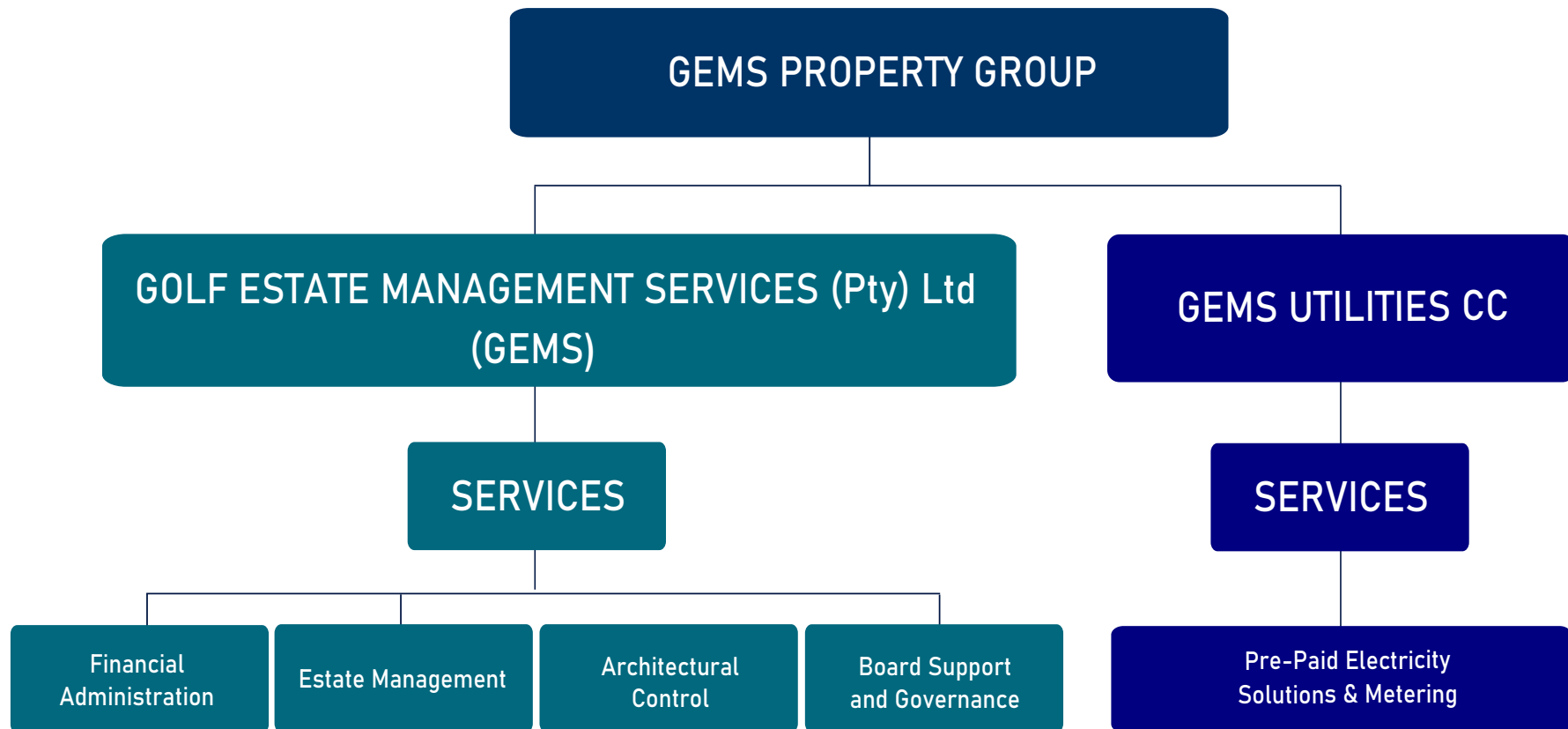
Our philosophy is that the Board should focus on high level planning and defining the vision for the estate and not be bogged down by getting involved in the day-to-day management of the Development.

The primary focus of GEMS is to add value to properties through efficient financial management and administration.

Year Established:	1996
Current staff:	31
Monthly Levies Billed:	7500+
Developments currently managed:.....	78



01 ABOUT GEMS



01

ABOUT GEMS

**Golf Estate Management Services (Pty) Ltd
(GEMS)**

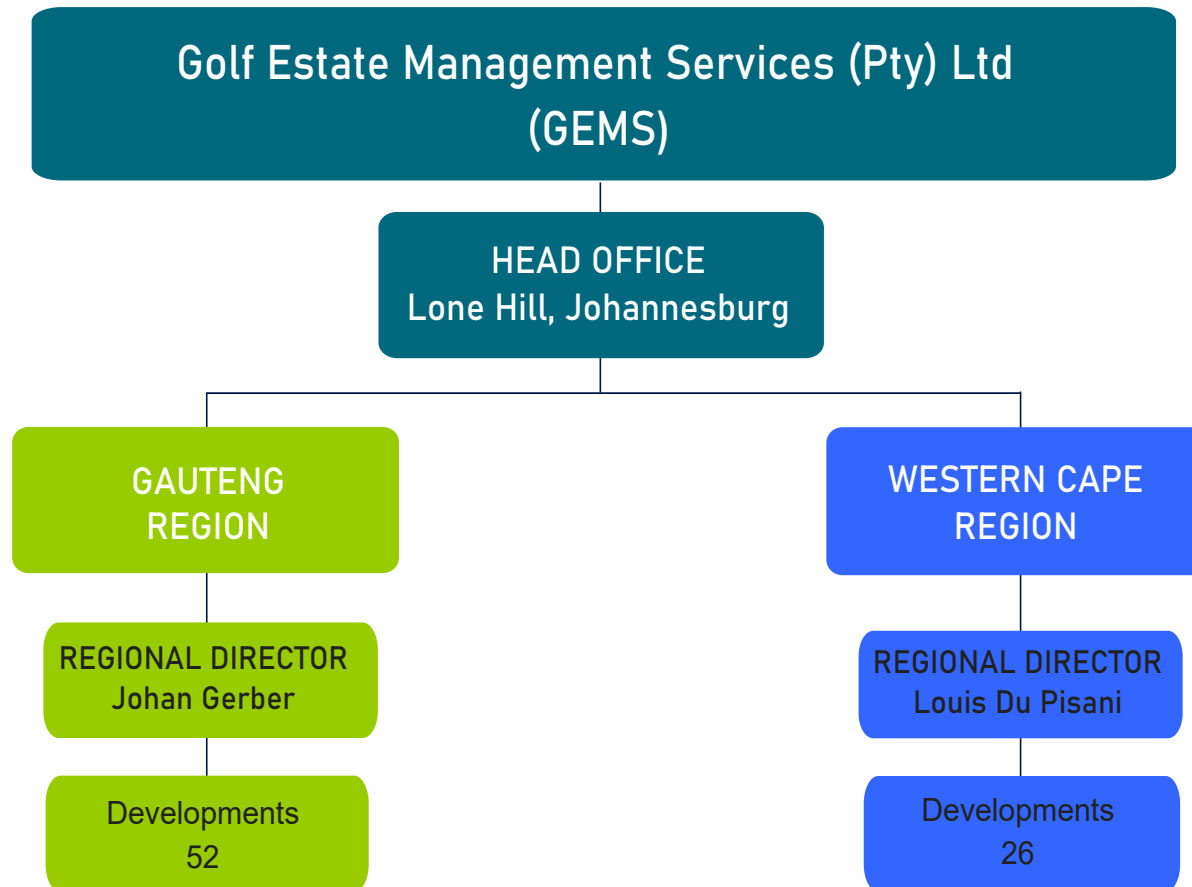
DIRECTORS

Johan Gerber (Regional)

Louis du Pisani (Regional)

Francois Pienaar (CFO)

01 ABOUT GEMS

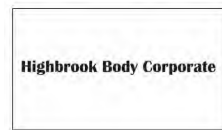


01 ABOUT GEMS

Facts & Figures



02 CURRENT CLIENTS



02

CURRENT CLIENTS

Residential Properties (Gauteng)

5th On East BC
Avenues on Broadacres HOA
Baroque Estate
Ben Avon Ben Eden BC
Brendavere Estate
Broad Acres Drive
Candlewoods Estate
Cathkin Estate
Cornwall Country Estate
Country View Estate
Country View Estate - Country Village BC
Country View Estate - Summer Hill BC
Darrenwood Residents Association
Eye of Africa Estate - Haymarket at the Village BC
Eye of Africa Estate - MiPad BC
Eye of Africa Estate - Pine Valley BC
Fernridge Estate
Harbour Town Estate
Highbrook BC
Hillbrow Community Centre
Kings Creek BC
One Forrest Road
Sandhurst Village BC
Savanna Hills Estate
Serengeti - The Lakes at Whistling Thorns BC
Serengeti - The Signature BC
Serengeti - The Whistling Thorns BC
Summerfields Estate - Canyon Creek BC
Summerfields Estate - Summer Brook BC
The Neighbourhood HOA
Unicrest BC
Vaal Marina Boatlockers BC
Verresig Estate

Residential Properties (Gauteng)

Waterberg Fields Estate
Waterstone Estate
Wedgewood Green BC
Widcombe Residents Association

Commercial Properties (Gauteng)

Cosmo Business Park
Founders Hill Business Park
Graceview Association
Graceview Ext 3 OA
Greater Modderfontein Prop Umbrella Ass
Longlake Ridge East OA
Longlake Ridge West OA
Longmeadow Business Park
Lords View Industrial Park

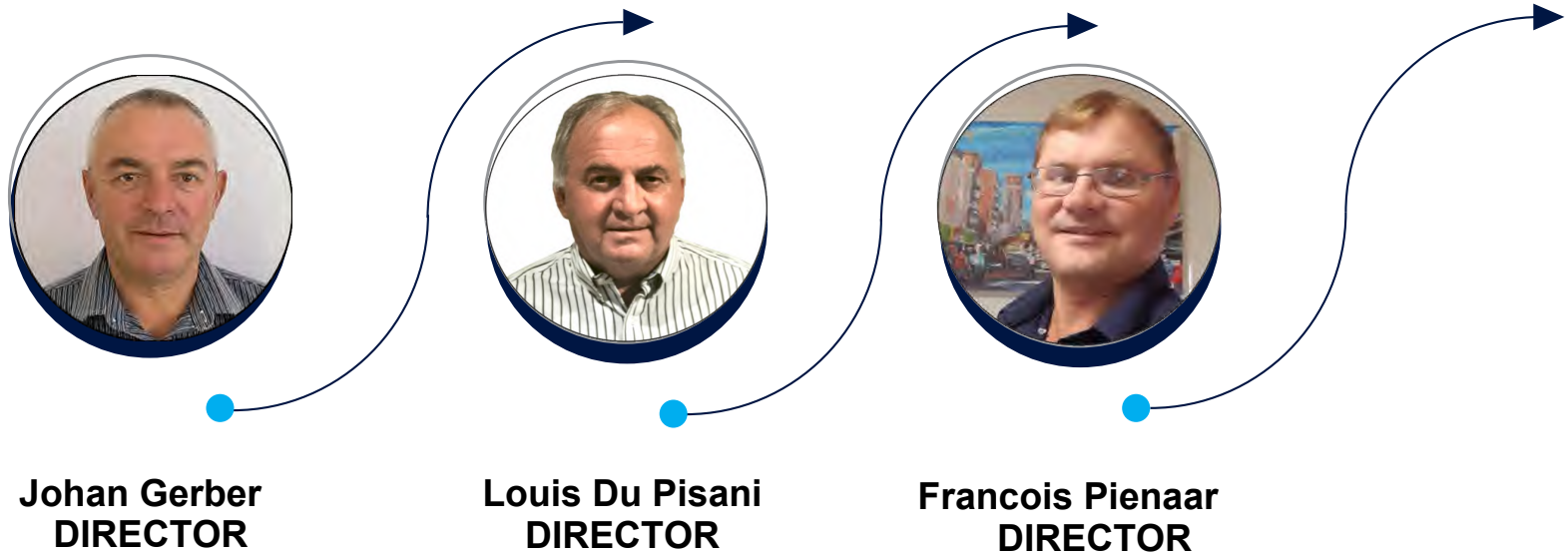
Residential Properties (Western Cape)

Avalon Estate
Boskloof Eco Estate
L'Agulhas Nature Reserve
Mountain View Retirement Village
Nooitgedacht Simonsberg Manor HOA
Nooitgedacht Manor HOA
Nooitgedacht Simonsberg Close HOA
Nooitgedacht Village Close HOA
Nooitgedacht Village Corner HOA
Nooitgedacht Village POA
Nooitgedacht Village Square BC

Residential Properties (Western Cape)

Nooitgedacht Village Terrace HOA
Nooitgedacht Village Walk HOA
Roberston Lifestyle Estate
Roberston Lifestyle Estate - JE Park BC
Silwerstrand Golf & River Estate
Somerset Lakes - Brookdale BC
Somerset Lakes - Herons Rest HOA
Somerset Lakes - Kingfisher Terrace BC
Somerset Lakes - Lakeview Terrace BC
Somerset Lakes - Plovers Nest HOA
Somerset Lakes - The Lakes HOA
Somerset Lakes - Waterford Green BC
Somerset Lakes Masters OA
Soteria Estate
The Greens BC

03 OUR TEAM



03 OUR TEAM



Expertise:

**Structuring & Management
of Property Owners
Associations**

**Financial Planning &
Structuring of Owners
Associations**

**Aligning Developer &
Owners objectives**

Johan Gerber Founder Director

Johan was part of the development team that started Fancourt in the late eighties. He then joined Johnnic Properties in 1991 to become part of the development team responsible for the development of Dainfern Golf Estate, Steenberg Golf Estate and Atlantic Beach Golf Estate. Between 1992 - 1996 he was seconded by Johnnic to oversee the running of Dainfern Golf Estate.

In 1996 he established Golf Estate Management Services (GEMS) that specialises in the management of golf, residential and commercial estates. GEMS structured and managed De Zalze Golf Estate, Copperleaf Golf Estate, Val de Vie Equestrian Estate, and Dainfern Valley Residential Estate during their development phases and is currently doing the same for Somerset Lakes Residential Estate, Silverstrand Golf Estate, Eye of Africa Golf Estate, Lords View Business Estate, Longmeadow Business Estate and Greater Modderfontein Property Umbrella Association to name but a few.

Qualifications:
B.Com

03 OUR TEAM



Expertise:

Developer Consultation - Project Planning

Economic Modeling & Management

Estate Management & Financial Administration

Louis du Pisani Director

Louis qualified with a MA in Clinical Psychology from the University of Stellenbosch. He then joined the Correctional Services as psychologist and ended up as Head of Personnel Selection. After his military service he joined Old Mutual as a Management Development Center Administrator. He was then head hunted by Byrne Fleming International Management Consultants as Organisational Behaviour Specialist in their project implementation and analysis team on various projects.

He then joined DISA Consultancy which was part of Huff Border Smith Consulting engineers as development consultant and did community-based projects, development proposals and project management. He joined Consultburo Consulting Engineers who later merged with BKS Consulting Engineers. He ended as Divisional Director Institutional and Social Development of BKS-Consultburo and joined TMA as project manager on the Mozal 2 Aluminium Project in Maputo and then moved on to the Coega IDZ project in Port Elizabeth in the same capacity.

In July 2004 he joined GEMS and was responsible for various Estate Management functions on development projects like Eagle Canyon, Waterstone Estate, Savanna Hills Estate, Copperleaf Estate, Cosmo Business Park, Lordsvue Business Park, One Forrest Road Estate, The Neighbourhood Estate to name but a few. He became a Managing Member of Golf Estate Management Services in July 2007. He has gained a lot of expertise on various developments and knowledge in the setting up and management of homeowner associations and bodies corporate.

Louis is currently responsible for the GEMS portfolio of projects and clients in the Western Cape.

Qualifications:

MA in Clinical Psychology

03 OUR TEAM



Expertise:

Accounting

Sectional Title Schemes

Association Financial
Planning

Francois Pienaar Chief Financial Officer

Jacobus Francois Pienaar have been the Chief Financial Officer at Golf Estate Management Services (GEMS) since November 2016. Prior to this he was working as CFO in the Non Profit sector with special focus on social housing, poverty alleviation and inner city regeneration. In this role he was awarded the Gordon Institute of Business Science innovation award for social entrepreneurship and was selected as a Clinton Democracy Fellow.

In 2014 he was co-opted onto a national working committee drafting the national policy on special needs housing.

Qualifications:

B.Com

Higher diploma in Accounting and Corporate Governance

B.Com Honours degree in Strategic Management

Certificate in Social Entrepreneurship

Certificate Sectional Title Management

Gems Property Group

0876 100 140

www.gemsprop.co.za

Johannesburg Offices

55 Thembi Office Place, Calderwood Road, Lonehill, 2086
Private Bag X6, Fourways North, 2086

Western Cape Offices

2nd Floor Preferred Solutions Building, 3 Gardner Williams Avenue,
Paardevlei Estate, Somerset West, 7130

PO Box 2988, Somerset West, 7129

Tel: +27 (0)21 851 3583

