



NAMA Newsletter | Issue 03 | 2020



## **Installation of generators within a Sectional Title Scheme**

*By* ELMO STUART, EY STUART INC.

The Trustees of Troubled Waters Body Corporate requested to be advised if they can make a rule that private generators are not allowed to be used for the generation of power for individual Sections within their Sectional Title Scheme.

They initially allowed generators to be housed in garages, but as this created health and safety issues, they considered to allow placement of generators within exclusive use areas. The noise and fumes would however increase the nuisance factor.

[Read the full article](#)

Advertorials

**AON**  
Empower Results®

Leading global professional services firm providing a broad range of risk, retirement and health solutions. [\(Click for more\)](#)



Caring in the context of the changing COVID-19 environment, through seeing the bigger picture [\(Click for more\)](#)



Cash Flow during Lockdown [\(Click for more\)](#)



Free solar electricity [\(Click for more\)](#)



Access Funding [\(Click for more\)](#)



Smart-home insurance solutions [\(Click for more\)](#)

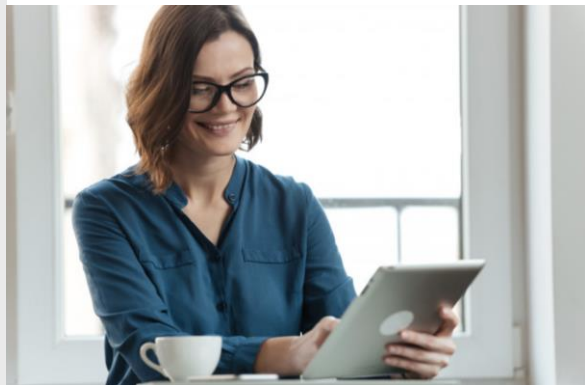


## Upcoming Events



## Corporate Academic Membership

NOW AVAILABLE



## Subscribe to our

Newsletter

*NEXT ISSUE: JUNE 2020*

**NAMA DISCLAIMER:** The opinion expressed in this Newsletter is not necessarily that of NAMA. The article pertaining to content is based on that of the writer and should only be used as such. The editor may elect to make amendments to the initial content, but this should not be seen as an official opinion or correction of the content. The use of such information or advice is at the user's own risk and should not be considered as a formal opinion or be considered as legal advice or legal opinion of any kind. NAMA will not be held liable for any damages, losses or causes of actions of any nature whatsoever arising from the information or advice given. The newsletter is not a discussion platform. Any discussion regarding the published article must be forwarded directly to the author of the article.

### *NAMA Corporate Members*





{{Sender\_Name}}

{{Sender\_Address}}, {{Sender\_City}}, {{Sender\_State}} {{Sender\_Zip}}

[Unsubscribe](#)

---

PUBLISHED BY : NAMA  
Contact person : Lizbe Venter  
[lizbe@nama.org.za](mailto:lizbe@nama.org.za)